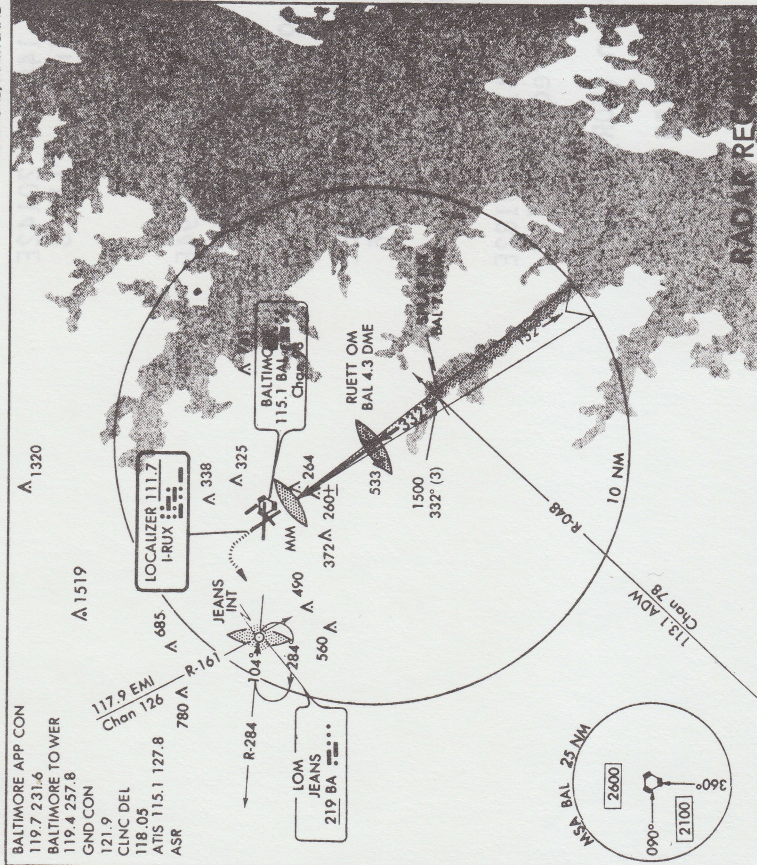


Amdt 3

ILS RWY 33L

AL-804 (FAA)

BALTIMORE-WASHINGTON INTL (BWI)  
BALTIMORE, MARYLAND



MISSED APPROACH Climb to 600 then climbing left turn to 2000 via BAL R-284 to Jeans Int/LOM and hold.		SPLAT INT BAL 7.3 DME		ELEV 146 MIRL Rwy 15L-33R	
CATEGORY	A	B	C	D	
S-ILS 33L	342-1/2	200 (200-1/2)			
S-LOC 33L	520-1/2	378 (400-3/4)	570-3/4		
CIRCLING	640-1	494 (500-1)	640-1 1/2	760-2	
CAT D S-LOC visibility increased 1/4 mile for inoperative MM.					
TDZ/CL Rwy 10 REIL Rwy 4, 22, and 33R HIRL Rwy 10-28, 15R-33L and 4-22 FAF to MAP 4 NM					
Knots	60	90	120	150	180
Min:Sec	4:00	2:40	2:00	1:36	1:20

ILS RWY 33L

39°10'N-76°40'W

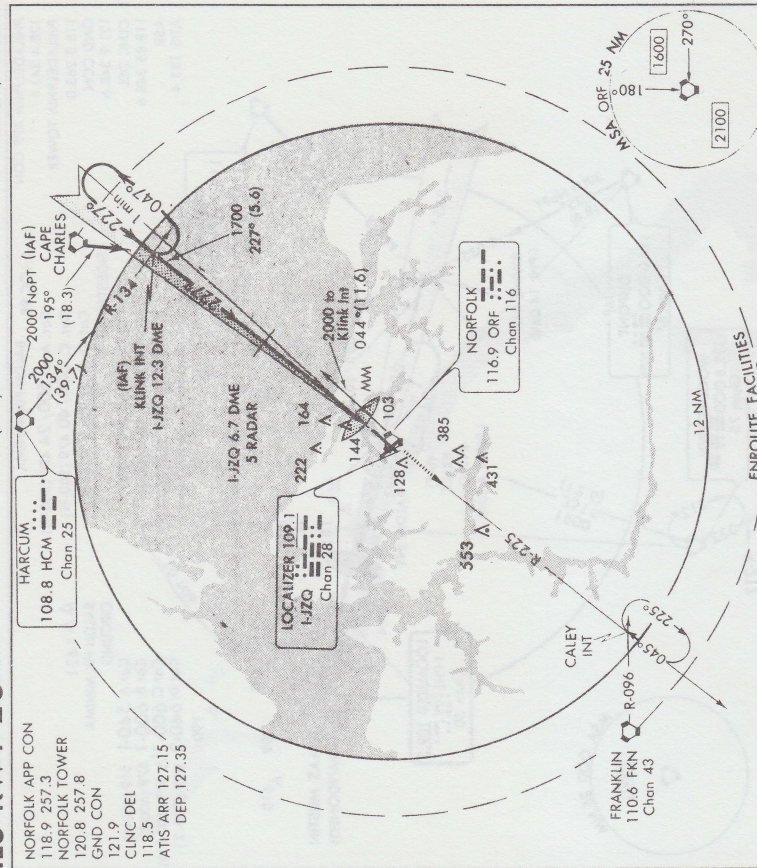
BALTIMORE-WASHINGTON INTL (BWI)  
BALTIMORE, MARYLAND

Amdt 4

ILS RWY 23

AL-291 (FAA)

NORFOLK INTERNATIONAL (ORF)  
NORFOLK, VIRGINIA



MISSED APPROACH Climb to 2000 via ORF VORTAC R-225 to Caley Int and hold.		KLINK INT I-JZQ 12.3 DME Holding Pattern		ELEV 27 Rwy 14 ldg 4664' Rwy 5 ldg 8000' 6.7 DME/5 RADAR	
CATEGORY	A	B	C	D	
S-ILS 23	321-3/4	295 (300-3/4)			
S-LOC 23	400-3/4	374 (400-3/4)	580-2		
CIRCLING	460-1	480-1	540-1 1/2	553 (600-2)	
DME or radar required. Inoperative table does not apply. S-LOC Cats. A, B, C, increase visibilities 1/4 mile, Cat D 1/2 mile, for inoperative MALS.					
S-LOC Cat. D increase visibility 1/4 mile for inoperative MM.					
REIL Rwy 14 and 32 HIRL Rwy 5-23 MIRL Rwy 14-32 FAF to MAP 5 NM					
Knots	60	90	120	150	180
Min:Sec	5:00	3:20	2:30	2:00	1:40

ILS RWY 23

36°54'N - 76°12'W

NORFOLK INTERNATIONAL (ORF)  
NORFOLK, VIRGINIA